

# FT4000AB (ADBLUE)

## INTEGRATED ADBLUE PUMP / FUEL MANAGEMENT SYSTEM

The FT4000 AB is designed as a simple yet sophisticated fuel management system and combination adblue pump, intended to provide complete control for commercial transport organisations dispensing adblue.

The **FT4000 AB** comprises hardware and software and can form part of a network with other systems in our range, the hardware is a highly specified Fuel Access Control Terminal (FACT) and a good quality/high accuracy adblue pump. The **FT4000 ADBLUE** communicates with **FUELTEK FMO** Browser based software, which is common to all our products and is accessible from any location with internet access.

### SPECIFICATION

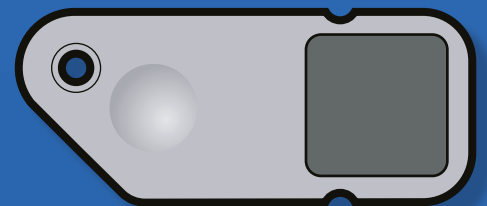
The **FT4000 AB** is specified as a combination adblue dispenser / fuel management system. The **FT4000 AB** system incorporates a Graphics display which displays clear concise messages in plain English. Incorporates a robust heavy-duty telephone style keypad with alpha numeric capability which enables inputs to be made at the point of filling, with a choice of access methods including our robust & reliable Datatag Reader/ Magnetic Card Reader/ Datanozzle Reader.

The **FT4000 AB** incorporates vehicle / driver messaging. A message can be programmed at the **FUELTEK FMO** software and sent to the FACT. The next time the relevant datatag or other access method is used at the FACT a message will be displayed.

Transactions are stored in non-volatile memory that does not require a battery back-up, which, means even in the event of a mains power fail the system will retain all data.



*(DATATAG -  
Shown Life Size)  
Datatag is  
designed to fit  
on a standard  
keyring*



*Datatags are Robust, Reliable, Easy to Use and  
are Guaranteed for the life of the system.*

**fueltek ...**

## REPORTING

For reporting purposes data is uploaded from the FACT to **FUELTEK FMO**. Reports can be generated, viewed and/or printed from any device at any location with internet access.

## COMMUNICATION

The **FT4000 AB / FUELTEK FMO** can support a number of communication methods.

Most commonly we use GPRS modems to allow internet connectivity at the FACT. No call charges apply using GPRS as a small monthly rental fee covers an amount of data transferred.

We can network Interface allowing the **FT4000AB** to form part of a LAN / WAN.

**The Main Tasks of FUELTEK FMO are:**

- COMMUNICATIONS TO THE FACT PROGRAMMING DATATAGS/ ACCESS DEVICES
- MAINTAINING TABLES (DRIVERFUELLERLOCKOUT)
- RUNNING REPORTS
- STOCK CONTROL
- BACKING UP DATA PERIODICALLY

**FUELTEK FMO** incorporates a reports generator which gives you the ability to create and customise your own reports.

## PUMP SPECIFICATION

**Pumping Unit:** Direct Drive pump and motor (maximum run time 20 minutes)

**Motor:** 230v Single Phase rated at 10 amp.

**Meter:** Turbine, accurate to +/- 1%

**Cabinet:** Stainless Steel with lockable front door.

**Display:** Electronic LCD Graphics Display with Backlight. Shows up to 9,999.9 litres

**Period Totaliser:** Shows up to 9,999,999 Litres.

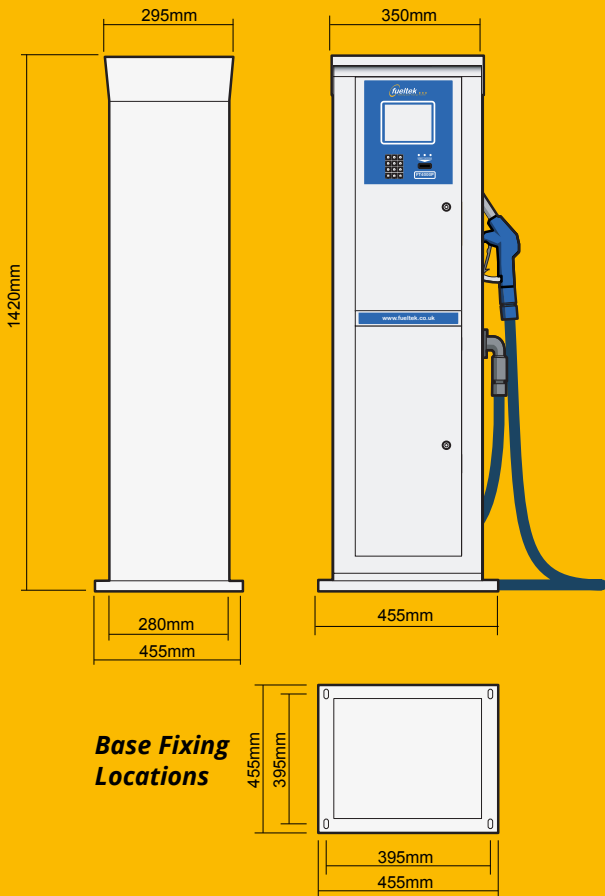
**Lifetime Totaliser:** Shows up to 9,999,999 Litres.

**Pump Speed:** Standard 40 Litres Per Minute.

**Standard Equipment:** Auto – Cut Off Nozzle. 3.6 metre Hose.

## CONSTRUCTION

The **FT4000 AB Cabinet** is manufactured entirely from stainless steel. The unit is sturdy, robust and designed to operate in harsh environments.



THE FT4000 AB IS ALSO AVAILABLE AS A PUMP ONLY  
IF REQUIRED PLEASE ASK FOR DETAILS

# MAKING YOUR FUEL GO FURTHER...

CONTACT US NOW

01254 291391 or visit [fueltek.co.uk](http://fueltek.co.uk)

FUEL MANAGEMENT & MONITORING SYSTEMS

