

FT4000AP

FUEL MANAGEMENT SYSTEM

The **FT4000** is a simple yet sophisticated fuel management system, designed to provide complete control for commercial transport organisations dispensing fuel to authorised vehicles on-site.

The **FT4000** comprises hardware and software, the hardware is a highly specified Fuel Access Control Terminal (FACT) designed to be installed at the fuelling location. The **FT4000** communicates with **FUELTEK FMO** Browser based software, which is accessible from any location with internet access.

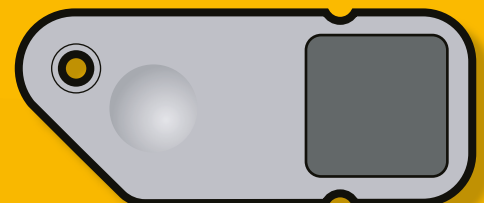
The **FT4000AP** is specified as a combination fuel dispenser / fuel management system. The **FT4000AP** can control up to 4 fuel pumps simultaneously (1 internal and 3 external).

The **FT4000AP** is capable of up to four pump simultaneous operation. The **FT4000** system incorporates a robust heavy duty keypad which enables odometer readings, driver ID's, fleet numbers, job codes etc. to be entered at the point of fuelling. The **FT4000** can be specified with keypad options including Full alpha Numeric, multiple choice alpha numeric (old style text messaging) or simply numeric.

The **FT4000** system incorporates a highly visible ¼ VGA back- lit graphics display which displays clear concise messages, to complete the user interface we use our extremely reliable Datatag reader or one of the other options available including Datadisk, Datacard or Magnetic Stripe card.

The **FT4000** incorporates vehicle / driver messaging. A message can be programmed at **FUELTEK FMO** can be sent to the FACT. The next time the relevant Datatag is used at the FACT a message will be displayed. The **FT4000** system has the capability to provide unlimited storage capacity for look up tables, fleet lists and transaction storage, the system offers a minimum primary memory capacity of 2,000 transactions between downloads, these are stored in non-volatile memory that does not require a battery back-up, which, means even in the event of a mains power fail the system will retain all data. The primary memory can be upgraded to store a larger number of transactions if required.

*(DATATAG - Shown Life Size)
Datatag is designed to fit on a standard keyring*



Datatags are Robust, Reliable, Easy to Use and are Guaranteed for the life of the system.

fueltek ...

ACCESS METHOD

The FT4000 system offers choices of access method. **Datatag, Datadisk, Datacard or Mag Stripe card. The Datatag is our preferred method and is guaranteed for the life of system.**

The **Datatag** we manufacture is a read/write tag, incorporating high security authentication using a cryptographic algorithm and a guaranteed 100,000 read/write cycles minimum. Data retention is 10 years minimum. The advantages of the **Datatag** are that there are no moving parts maintenance is therefore low, saving costs in the long term on the upkeep of the system. **Datatags** supplied are guaranteed for the life of the system. The datatag is a read/write device and can be programmed with many operating parameters. All **FUELTEK FMO**, you do not have to be in possession of the device to be programmed, you can commit changes at **FUELTEK FMO** and the device will be updated the next time it is used in the **FT4000 (FACT)**.

REPORTING

For reporting purposes data is uploaded from the **FACT** to **FUELTEK FMO**. Reports can be generated, viewed and / or printed from any location with internet access.

COMMUNICATION

The **FT4000 / FUELTEK FMO** can support a number or communication methods.

Most commonly we use GPRS modems to allow internet connectivity at the FACT. GPRS (General Packet Radio Service) is a wireless data service and is a connectivity solution based on internet protocols. No call charges apply using GPRS as a small monthly rental fee covers an amount of data transferred.

We can network Interface allowing the **FT4000** to form part of a LAN / WAN.

We can utilise Bluetooth, Wi-fi or even cable RS232 or RS485 to provide a route into your own Broadband connection if required.

The Main Tasks of **FUELTEK FMO** are:

- COMMUNICATIONS TO THE FACT
- PROGRAMMING DATATAGS/ ACCESS DEVICES
- MAINTAINING TABLES (DRIVER\FUELLER\LOCKOUT)
- RUNNING REPORTS
- STOCK CONTROL
- BACKING UP DATA PERIODICALLY

FUELTEK FMO incorporates a reports generator which gives you the ability to create and customise your own reports.

PUMP SPECIFICATION

The **FT4000AP** pumping unit is a 230 Volt Single phase and can be specified as a 50, 70 or 90 Litre Per Minute fuel pump. A 3.6 metre hard wall hose and an auto cut off nozzle are supplied as standard, we can supply a longer hose if required. The unit uses a four piston displacement meter to ensure overall accuracy of fuel dispensed. The meter is calibrated to forecourt accuracy which is achievable over all dispensing speeds.

Pumping Unit: Belt Driven with Air Separation

Motor: 230v Single Phase rated at 10 amp.

Meter: 4 Piston Displacement Meter accurate to +/- 0.5 %

Cabinet: Stainless Steel with lockable front door.

Display: Electronic LCD Graphics Display with Backlight. Shows up to 9,999.9 litres

Period Totaliser: Shows up to 9,999,999 Litres.

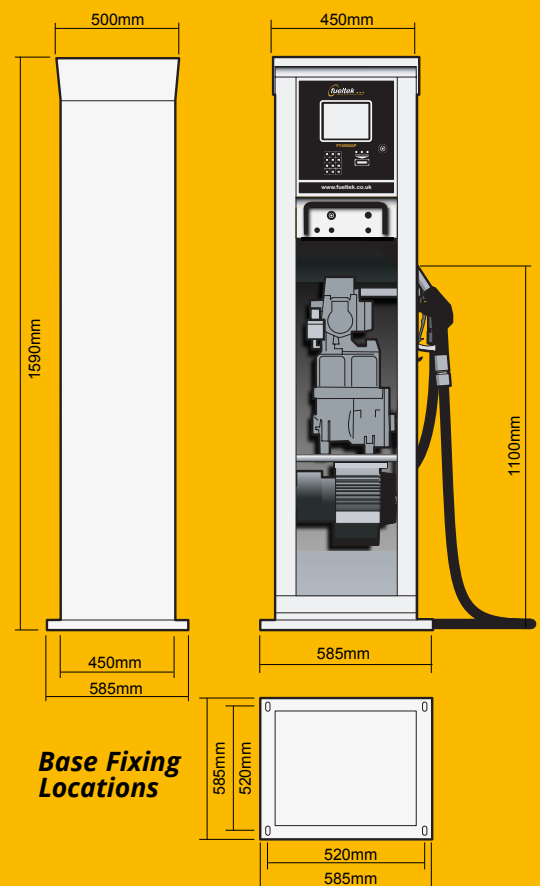
Lifetime Totaliser: Shows up to 9,999,999 Litres.

Pump Speed: Standard 70 Litres Per Minute. (available in 50 & 90lpm Option)

Standard Equipment: Auto - Cut Off Nozzle. 3.6 metre Steel Braided Hose.

CONSTRUCTION

The **FT4000AP** Cabinet is manufactured entirely from stainless steel. The unit is sturdy, robust and designed to operate in harsh environments.



MAKING YOUR FUEL GO FURTHER...

CONTACT US NOW

01254 291391 or visit fueltek.co.uk

FUEL MANAGEMENT & MONITORING SYSTEMS

fueltek ...